

# Pretium™ Connector Housings

A LANscape® Pretium™ Solutions Product

Corning Cable Systems

**LANscape®**  
**PRETIUM**  
THE PREMIER SOLUTION

## Applications

- Main cross-connect, intermediate cross-connects and telecommunications rooms
- Rack or equipment cabinet installations
- Data center fiber distribution frames
- Cross-connects using large quantities of low-fiber-count-cables

## Description

Corning Cable Systems Pretium™ Connector Housings are designed for the LAN and data center environment. The housings are four inches deeper than standard CCH housings and are shipped with everything the installer needs. Mountable in 19- or 23-in (optional) equipment racks or cabinets, the housings provide easy, open access to connectors for moves, adds and changes and for connector cleaning.

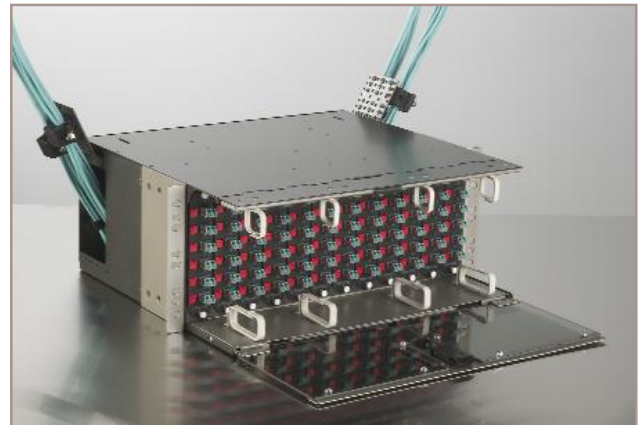
The 4U (7 inches tall) housing accepts 12 Corning Cable Systems CCHE connector panels or CCH connector modules while the 1U (1.75 inches tall) housing accepts two CCHE connector panels or CCH modules\*. CCHE connector panels and CCH modules are available in a wide variety of port counts depending on connector style. Blank panels are provided in unused positions to give a finished look.

The PCH-04U housing contains an integral hinged jumper manager on the front of the housing. This manager can be locked in the “up” position for an additional 1U of horizontal jumper management or left in the default “down” position to provide additional capacity for jumper routing along the top of the housing.

The PCH-01U housing has a removable top that slides forward with the simple release of two latches, providing unencumbered access to interior components. The drawer slides forward or backward for easy access to the interior after installation.



PCH-01U and PCH-04U Housings



Close-up of PCH-04U Integrated Jumper Manager



PCH-04U with Splice Option

\*Note: Standard depth modules cannot be used when splicing. Use pigtailed panels or reduced depth modules.

# Pretium™ Connector Housings

A LANscape® Pretium™ Solutions Product

Corning Cable Systems

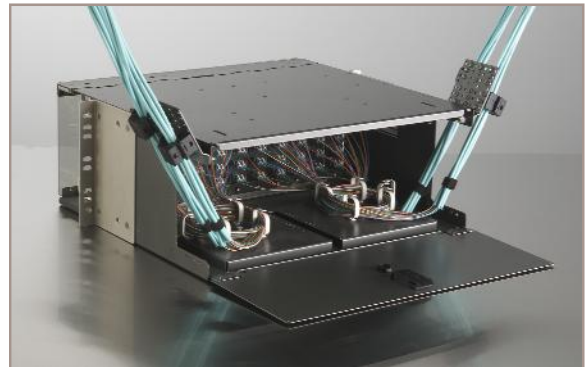
**LANscape®**  
**PRETIUM**  
THE PREMIER SOLUTION

## Features

- Optional splicing available in all units
- Deeper housings provide extra room for high cable-counts and Corning Cable Systems Plug & Play™ Systems
- Large fiber guides in front contain patch cords
- Connector labeling optimized for use with machine-generated labels and Microsoft® Word templates
- Front and rear removable doors (optional locks available)
- Grommeted cable entries keep dust out of the PCH-04U
- Integrated, hinged jumper manager (PCH-04U only)
- Transparent front door (PCH-04U only)
- Rugged metal construction
- Units include patented Universal Cable Clamp for cable strain-relief
- Fiber capacity: PCH-04U = 288 fibers (using LC or MT-RJ direct termination; 144 when splicing), PCH-01U = 48 fibers (using LC or MT-RJ)
- Accepts CCHE panels and CCH modules (panels or the reduced-depth module design must be used when splicing)



PCH-01U with Removed Cover



Close-up of PCH-04U Cable Entry

## Specifications

Order Number	Dimensions (HxWxD)	Shipping Weight	Quantity per Delivery Unit
PCH-01U	4 x 43 x 41 cm (1.75 x 17 x 16 in)	7.0 kg (15 lb)	1/1
PCH-04U	18 x 43 x 41 cm (7 x 17 x 16 in)	7.5 kg (16.5 lb)	1/1
PCH-04U-SPL	18 x 43 x 41 cm (7 x 17 x 16 in)	7.5 kg (16.5 lb)	1/1

# Pretium™ Connector Housings

A LANscape® Pretium™ Solutions Product

Corning Cable Systems



## Ordering Information

Order Number	Description	Quantity per Delivery Unit
PCH-01U	Pretium™ Connector Housing, 1U tall, accepts up to two CCHE connector panels or CCH reduced depth modules, supplied with one Universal Cable Clamp, two blank panels and installation hardware	1/1
PCH-04U	Pretium Connector Housing, 4U tall, accepts up to 12 CCHE connector panels or CCH reduced depth modules, supplied with one Universal Cable Clamp, 12 blank panels and installation hardware	1/1
PCH-04U-SPL	Pretium Connector Housing, 4U tall, accepts up to 12 CCHE connector panels or CCH reduced-depth modules, supplied with one Universal Cable Clamp, 12 blank panels, installation hardware and tray holder for MFT splice trays	1/1

### PCH Optional Accessories

PC1-LBL-PI10	PCH-01U Master Label provides room to label up to 48 individual fibers per label; three master labels per 8-1/2 x 11-in sheet; for ink-based printers only	10/1
PC4-LBL-PI10	PCH-04U Master Label provides room to label up to 288 individual fibers per label; one master label per 8-1/2 x 11-in sheet, for ink-based printers only	10/1
PC1-SPLC-04R	Splice Tray Bracket for PCH-01U; accepts up to four Type 2R 0.2-in or two Type 4R 0.4-in reduced-length splice trays; includes slack storage spools	1/1
PC4-SPLC-12SR	Splice Tray Bracket for PCH-04U; accepts up to 12 Type 2S 0.2-in or 7 Type 4S 0.4-in standard length splice trays; or accepts up to 12 Type 2R 0.2-in or 7 Type 4R 0.4-in splice trays; works with left side cable entry only	1/1
PC1-STRN	PCH-01U Strain-Relief Bracket; will accept up to two Universal Cable Clamp kits (UCC-001)	1/1
PC4-STRN	PCH-04U Strain-Relief Bracket; will accept up to two Universal Cable Clamp kits (UCC-001)	1/1
UCC-001	Universal Cable Clamp Strain-Relief Kit; to be used with PC1-STRN or PC4-STRN	1/1
HDWR-LOCK-KIT	Door Lock Kit; can be installed on the front and/or back doors of the PCH-04U; comes with one lock and two keys	1/1
PC4-SLK	Rear Slack Storage Bracket for PCH-04U; installed in the rear of the housing for additional slack storage; one supplied with PCH-04U	1/1
PC1-LOCK-KIT	Door Lock Kit; can be installed on the front and/or back door(s) of the PCH-01U; comes with one lock and two keys	1/1
PC1-BKT-FLSH	Flush Mount Brackets (one set) for PCH-01U	1/1
PC1-BKT-23	Mounting Brackets for 23-in frames/cabinets for PCH-01U	1/1
PC4-BKT-FLSH	Flush Mount Brackets for PCH-04U	1/1
PC4-BKT-23	Mounting Brackets for 23-in frames/cabinets for PCH-04U	1/1
CJP-01U-P	1U Jumper Management Panel, provides jumper management in a 1.75-in rack space	1/1
CJP-02U-P	2U Jumper Management Panel, provides jumper management in a 3.5-in rack space	1/1
PC4-SLK-D24	Accessory Unit attached to the rear of the PCH-04U providing fiber cable storage in 24 circular cassettes	1/1
PC4-SIDE-PLT	Front Metal Plates and Grommets to enclose the front of the PCH-04U	5/1

Please see page to chapter XXX, page XXX for splice tray options.

# Closet Connector Housings CCH-01U & CCH-02U

A LANscape® Solutions Product

## Applications

- Corning Cable Systems' Closet Connector Housings (CCH) provide interconnect or cross-connect capabilities between the outside plant, riser, or distribution cables, and the opto-electronics.

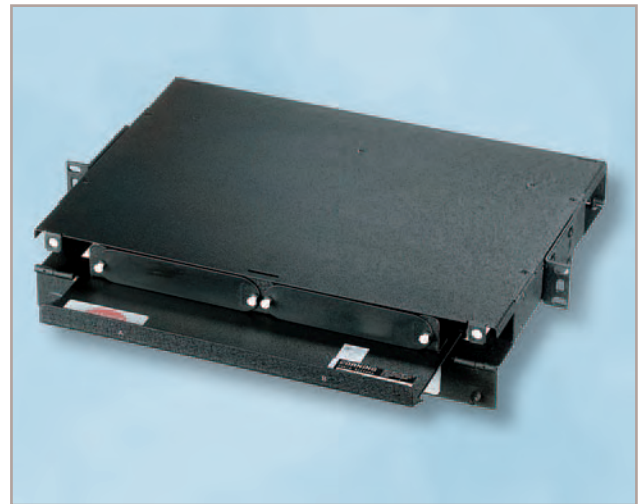
## Description

The units can be rack-mounted in 48 cm (19 in) or 58 cm (23 in) equipment racks (4.45 cm - 1.75 in- EIA/TIA hole spacing) and are available in one rack space (two connector panels) or two rack spaces (four panels).

Closet Connector Housings can be ordered with connector panels for multimode and single-mode applications. Connector panels are offered in 6-, 8-, 12-, 16- and 24-fiber configurations (depending on connector style). Documentation labels are provided and units or components can be added as needed to construct a fiber distribution frame for any application.

## Features / Benefits

- Ideal for field connectorization
- Suitable for loose tube, tight-buffered and optical fiber ribbon cables
- Mounting configurations include standard 11.4 cm (4.5 in) frontal projection, partially flush and flush mount
- Multiple locations for jumper egress
- Accepts CCHE connector panels or modules
- Slide-out drawer for easy connector access
- Lock can be field-installed
- Meets requirements of ANSI/TIA/EIA-568A and 606
- Brackets included for rack mounting in 48 cm (19 in) or 58 cm (23 in) equipment racks



Closet Connector Housing, CCH-01U



Closet Connector Housing, CCH-02U



Bracket Kit for Wall Mounting, CCH-WALLMNT-KIT

Introduction

LANscape®  
Solutions

Plug & Play™  
Universal  
Systems

Fiber Optic  
Cables

Fiber  
Termination

Cable  
Assemblies

Hardware

Closures

Cable Assembly  
Houses

Cable  
Management

Other Product  
Families

Further  
Information

# Closet Connector Housings CCH-01U & CCH-02U

A LANscape® Solutions Product

## Specifications

Order Number	Dimensions (H x W x D) cm (in)	Shipping Weight kg (lb)	Quantity per Delivery Unit
CCH-01U	4.4 x 43.2 x 30.5 (1.75 x 17 x 12)	2.3 (5)	1/1
CCH-02U	8.9 x 43.2 x 30.5 (3.5 x 17 x 12)	2.7 (6)	1/1

## Ordering Information

Order Number	Description	Quantity per Delivery Unit
CCH-01U	Closet Connector Housing that will accept up to two CCHE panels; comes with blank panels and hardware to strain-relieve one cable with the Universal Cable Clamp (UCC) or up to five 1 cm (0.4-in) or smaller cables with the UCC insert; two 6-fiber panels = 12 fiber total capacity; two 8-fiber panels = 16 fiber total capacity; two 12-fiber panels = 24 fiber total capacity; two 16-fiber panels = 32 fiber total capacity; two 24-fiber panels = 48 fiber total capacity (MT-RJ and LC)	1/1
CCH-02U	Closet Connector Housing that will accept up to four CCHE panels; comes with blank panels and hardware to strain-relieve one cable with the Universal Cable Clamp (UCC) or up to five 1 cm (0.4-in) or smaller cables with the UCC insert; four 6-fiber panels = 24 fiber total capacity; four 8-fiber panels = 32 fiber total capacity; four 12-fiber panels = 48 fiber total capacity; four 16-fiber panels = 64 fiber total capacity; four 24-fiber panels = 96 fiber total capacity (MT-RJ and LC)	1/1

## Pre-Loaded Housings

CCH-01U-2491	CCH-01U pre-loaded with 12 568SC (SC duplex) adapters (two CCHE panels), 62.5 µm multimode, composite insert, composite housing	1/1
CCH-01U-2497	CCH-01U pre-loaded with 12 MT-RJ adapters (two CCHE panels), 62.5 µm multimode, composite housing	1/1
CCH-01U-1215T	CCH-01U pre-loaded with 12 ST® compatible adapters (two CCHE panels), 62.5 µm multimode, ceramic insert, composite housing	1/1

## Accessories

CCH-1U-LBL	Replacement Label Kit for the CCH housing (1-rack-space housing)	10/1
CCH-2U-LBL	Replacement Label Kit for the CCH housing (2-rack-space housing)	10/1
CCH-WALLMNT-KIT	Bracket Kit for wall mounting the CCH housing, 6 rack spaces tall, hinged	1/1
CCH-UCC-KIT	One Bracket and Two Universal Cable Clamps (UCCs); each housing is shipped with one bracket and two UCCs; an additional bracket and UCC can be added	1/1
CJP-01U	Closet Jumper Management Panel; provides jumper management in a 1.75 in (4.45 cm) rack space	1/1
CJP-02U	Closet Jumper Management Panel; provides jumper management in a 3.5 in (8.9 cm) rack space	1/1
HDWR-LOCK-KIT	Lock Kit for front door of housing; contains one lock with two keys	1/1
FDC-CABLE-GRND	Armored Cable Grounding Kit; contains armor grounding clip and ground strap	1/1



# Closet Connector Housings CCH-03U & CCH-04U

A LANscape® Solutions Product

## Applications

- Corning Cable Systems' Closet Connector Housings (CCH) provide interconnect or cross-connect capabilities between the outside plant, riser, or distribution cables, and the opto-electronics.

## Description

The units can be rack-mounted in 48 cm (19 in) or 58 cm (23 in) equipment racks (4.45 cm - 1.75 in - TIA hole spacing) and are available in three-rack-space (six panels) or four-rack-space (12 panels) versions. For installations requiring 144 fibers, the capacity can be achieved using SC simplex, SC duplex, LC and MT-RJ connectors for 12 fibers per panel in conjunction with the four-rack-space housing. For installations requiring up to 288 fibers, the capacity can be achieved using LC and MT-RJ connectors for 24 fibers per panel in conjunction with the 4-rack-space housing.

Closet Connector Housings can be ordered with connector panels for multimode and single-mode applications. Connector panels are offered in 6-, 8-, 12-, 16- and 24-fiber configurations (depending on connector style). Documentation labels are provided and units or components can be added as needed to construct a fiber distribution frame for any application.

The CCH has been designed with an open top, located in the front of the housing in the 3- and 4-rack-space versions of the design. The opening, when used in conjunction with the Closet Jumper Management Panel (CJP), facilitates jumper routing.

## Features / Benefits

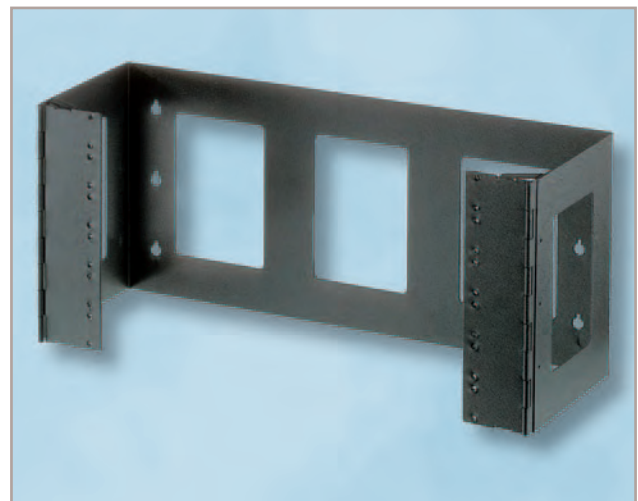
- Ideal for field connectorization
- Suitable for loose tube, tight-buffered and optical fiber ribbon cables
- Mounting configurations include standard 11.4 cm (4.5 in) frontal projection, partially flush and flush mount
- Multiple locations for jumper egress
- Removable, durable, clear polycarbonate-tinted front door (CCH-03U and CCH-04U)



Closet Connector Housing, CCH-03U



Closet Connector Housing, CCH-04U



Bracket Kit for Wall Mounting, CCH-WALLMNT-KIT

Introduction

LANscape®  
Solutions

Plug & Play™  
Universal  
Systems

Fiber Optic  
Cables

Fiber  
Termination

Cable  
Assemblies

Hardware

Closures

Cable Assembly  
Houses

Cable  
Management

Other Product  
Families

Further  
Information

# Closet Connector Housings CCH-03U & CCH-04U

A LANscape® Solutions Product

## Features / Benefits

- Lock can be field-installed
- Accepts CCHE connector panels or modules
- Open top of housing for vertical pigtail or jumper exiting
- Optional top and side covers available
- Meets requirements of ANSI/TIA/EIA-568A and 606
- Brackets included for rack mounting in 48 cm (19 in) or 58 cm (23 in) equipment racks



Lock Kit for front door of housing

## Specifications

Order Number	Dimensions (H x W x D) cm (in)	Shipping Weight kg (lb)	Quantity per Delivery Unit
CCH-03U	13.3 x 43.2 x 30.5 (5.25 x 17 x 12)	2.7 (6)	1/1
CCH-04U	17.8 x 43.2 x 30.5 (7 x 17 x 12)	3.6 (8)	1/1

## Ordering Information

Order Number	Description	Quantity per Delivery Unit
CCH-03U	Closet Connector Housing that will accept up to six CCHE panels or modules; comes with blank panels and hardware to strain-relieve two cables with the Universal Cable Clamp (UCC) or up to ten 1 cm (0.4-in) or smaller cables with the UCC insert; six 6-fiber panels = 36 fiber total capacity; six 8-fiber panels = 48 fiber total capacity; six 12-fiber panels = 72 fiber total capacity; six 16-fiber panels = 96 fiber total capacity; six 24-fiber panels = 144 fiber total capacity (MT-RJ and LC)	1/1
CCH-04U	Closet Connector Housing that will accept up to 12 CCHE panels or modules; comes with blank panels and hardware to strain-relieve two cables with the Universal Cable Clamp (UCC) or up to ten 1 cm (0.4-in) or smaller cables with the UCC insert; twelve 6-fiber panels = 72 fiber total capacity; twelve 8-fiber panels = 96 fiber total capacity; twelve 12-fiber panels = 144 fiber total capacity; twelve 16-fiber panels = 192 fiber total capacity; twelve 24-fiber panels = 288 fiber total capacity (MT-RJ and LC)	1/1

# Closet Connector Housings CCH-03U & CCH-04U

A LANscape® Solutions Product

## Ordering Information

Order Number	Description	Quantity per Delivery Unit
<b>Pre-Loaded Housings</b>		
CCH-04U-E491	CCH-04U pre-loaded with 72 568SC (SC duplex) adapters (12 CCHE panels), 62.5 µm multimode, composite insert, composite housing	1/1
CCH-04U-7291	CCH-04U pre-loaded with 36 568SC (SC duplex) adapters (6 CCHE panels), 62.5 µm multimode, composite insert, composite housing	1/1
CCH-04U-E497	CCH-04U pre-loaded with 72 MT-RJ adapters (12 CCHE panels), 62.5 µm multimode, composite housing	1/1
CCH-04U-7297	CCH-04U pre-loaded with 36 MT-RJ adapters (6 CCHE panels), 62.5 µm multimode, composite housing	1/1
CCH-04U-7215T	CCH-04U pre-loaded with 72 ST® compatible adapters (12 CCHE panels), 62.5 µm multimode, ceramic insert, composite housing	1/1
<b>Accessories</b>		
CJP-01U	Closet Jumper Management Panel; provides jumper management in a 4.45 cm (1.75-in) rack space	1/1
CJP-02U	Closet Jumper Management Panel; provides jumper management in a 8.9 cm (3.5-in) rack space	1/1
CCH-3U-LBL	Replacement Label Kit for the CCH housing (3-rack-space housing);	10/1
CCH-4U-LBL	Replacement Label Kit for the CCH housing (4-rack-space housing);	10/1
CCH-WALLMNT-KIT	Bracket Kit for wall mounting the CCH housing, 6 rack spaces tall, hinged	1/1
CCH-UCC-KIT	One Bracket and Two Universal Cable Clamps (UCCs); each housing is shipped with one bracket and two UCCs; an additional bracket and UCC can be added; two multi-cable grommets included that accept up to five 1.0 cm (0.4-in) diameter cables	1/1
HDWR-LOCK-KIT	Lock Kit for front door of housing; contains one lock with two keys	1/1
CCH-TOP-CVR	Patch Field Cover that covers top opening in CCH-03U and CCH-04U housings	1/1
FDC-CABLE-GRND	Armored Cable Grounding Kit; contains armor grounding clip and ground strap	1/1
CCH-04U-SIDEPNL	Side Panels to enclose CCH-04U housing	2/1

Introduction

LANscape® Solutions

Plug & Play™ Universal Systems

Fiber Optic Cables

Fiber Termination

Cable Assemblies

Hardware

Closures

Cable Assembly Housings

Cable Management

Other Product Families

Further Information



# Closet Connector Housing Panels (CCHE-CP)

A LANscape® Solutions Product

## Applications

- The panels are used with field-installable connectors or in applications where the preconnectorized cables are routed directly from the equipment to the piece of interconnect hardware
- Provides an efficient way to securely mate two or more connectors

## Description

Closet Connector Housing Panels are offered in 6-, 8-, 12-, 16- and 24-fiber panels for use with the LANscape® Solutions hardware products.

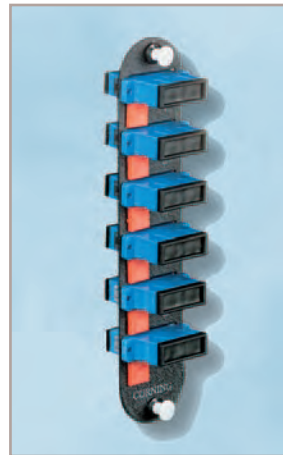
The panels are available with a variety of industry-standard adapter types. In most applications, the Closet Connector Housing Panels are designed for applications where specified labeling and connector identification are required. This is accomplished by the use of colored icons with different symbols molded into the icon.

## Features / Benefits

- Designed to accommodate all industry-standard adapter types
- Unique color-coded connector labeling system
- Universal approach is used; one panel size fits in all standard LANscape Solutions hardware
- Available in 6-, 8- and 12-fiber count options in most adapter styles; 16- and 24-fiber count options available in MT-RJ and LC duplex styles
- Also available for copper modules



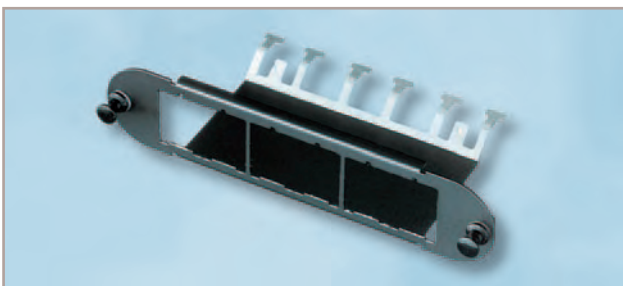
12-Fiber ST® Compatible Connector Panel



12-Fiber SC Duplex Panel



24-Fiber MT-RJ Connector Panel



CCHE Empty Panel  
for up to 6 LANscape modules (Copper and Fiber Optic)

# Closet Connector Housing Panels (CCHE-CP)

A LANscape® Solutions Product

## Ordering Information

### Closet Connector Housing Panels



Use the following options to construct the order number:

#### 1 Select fiber count.

- 06 = 6 fibers
- 08 = 8 fibers
- 12 = 12 fibers
- 16 = 16 fibers (\*)
- 24 = 24 fibers (\*)
- 36 = 36 fibers (\*\*)
- 72 = 72 fibers (\*\*)

\* = only LC Duplex, MT-RJ and SC Duplex adapters  
 \*\* = only MTP adapters

#### 2 Select adapters.

##### ST® Compatible

- 15 = ST compatible multimode, ceramic insert, 62.5µm and 50µm (OM1 & OM2)
- 19 = ST compatible single-mode ceramic insert (OS1)
- 25 = ST multimode, threaded, composite housing, composite insert (OM1)
- E5 = ST multimode, ceramic insert, 50µm (OM3)

##### FC

- 11 = FC single-mode, ceramic insert
- 21 = FC single-mode, metal insert

##### LC Duplex

- 04 = LC Duplex single-mode, ceramic insert (OS1)
- 05 = LC Duplex multimode, ceramic insert, 62.5µm (OM1)
- D3 = LC Duplex multimode, ceramic insert, 50µm (OM2)
- E4 = LC Duplex multimode, ceramic insert, 50µm (OM3)

##### SC Duplex

- 57 = SC Duplex, multimode, composite housing, ceramic insert, 62.5µm
- 72 = SC Duplex single-mode, ceramic insert (OS1)
- 91 = SC Duplex, multimode, composite insert, 62.5µm (OM1)
- E7 = SC Duplex multimode, ceramic insert, 50µm (OM3)
- G7 = SC Duplex multimode, ceramic insert, 50µm (OM2)
- P5 = SC Duplex, multimode, composite housing, metal insert, 50µm

##### SC Simplex

- 39 = SC Simplex, multimode, metal insert, 62.5µm (OM1)
- 56 = SC Simplex, multimode, composite insert, 62.5µm (OM1)
- 5C = SC Simplex, single-mode, ceramic insert (OS1)
- 6C = SC Simplex, angle polish single-mode, ceramic insert
- E6 = SC Simplex, multimode, ceramic insert, 50µm (OM3)
- P4 = SC Simplex, multimode, ceramic insert, 50µm (OM2)

##### MT-RJ

- 86 = MT-RJ multimode, composite housing 62.5µm (OM1)
- 87 = MT-RJ single-mode, composite housing (OS1)
- E1 = MT-RJ multimode, composite housing 50µm (OM3)
- G1 = MT-RJ multimode, composite housing 50µm (OM2)

##### E2000™

- P1 = E2000 APC, single-mode, composite housing, ceramic insert
- P2 = E2000 UPC, single-mode, composite housing, ceramic insert
- P3 = E2000 APC, multimode, 62.5µm and 50µm, composite housing

##### MTP

- 69 = MTP, multimode, composite housing, 62.5µm (OM1)
- 89 = MTP, single-mode, composite housing (OS1)
- E3 = MTP, multimode, composite housing, 50µm (OM3)

### Examples

Order Number	Description
CCHE-CP24-E4	Closet Connector Housing Panel with 12 LC-Duplex adapters 50µm (OM3), ceramic insert, aqua adapter
CCHE-CP72-89	Closet Connector Housing Panel with 6 MTP adapters 9µm (OS1), black adapter

# Closet Connector Housing Panels (CCHE-CP)

A LANscape® Solutions Product

## Ordering Information

### Closet Connector Panels for Modular Terminations (Copper and Fiber Optic)

Order Number	Description
CCHE-CP00-LS	CCHE empty panel for up to 6 LANscape® single-port modules or three dual-port modules (Category 5,6,7 copper or fiber optic modules), incl. integral cable strain relief

### Pigtailed Closet Connector Panels

CCHE - CP   -   - P03

1
2
3

Use the following options to construct the order number:

#### 1 Select fiber count.

- 06 = 6 fibers
- 08 = 8 fibers
- 12 = 12 fibers (only for SC duplex, LC duplex and MT-RJ)
- 16 = 16 fibers
- 24 = 24 fibers

#### 2 Select adapters.

##### ST® Compatible

- 50 = ST compatible, ceramic insert, multimode, composite housing
- 61 = ST compatible/UPC, ceramic insert, single-mode

##### FC

- 17 = FC, metal insert, multimode
- 21 = FC APC, metal insert, single-mode, metal housing
- 54 = FC UPC, metal insert, single-mode

##### SC Simplex

- 56 = SC Simplex, composite insert, multimode
- 5C = SC Simplex/UPC, ceramic insert, single-mode
- 6C = SC Simplex/APC, ceramic insert, single-mode

##### SC Duplex

- 72 = SC Duplex/UPC, single-mode, ceramic insert
- 91 = SC Duplex, composite insert, multimode, plastic housing

##### LC Duplex

- 04 = LC Duplex, ceramic insert, single-mode
- 05 = LC Duplex, ceramic insert, multimode

##### MT-RJ

- 86 = MT-RJ multimode
- 87 = MT-RJ single-mode

#### 3 Select fiber type.

##### MIC® Subunit Cable

- (Standard Fiber Cable Option)
- CH = Standard multimode (50/125 µm) OM2
- SH = Laser-optimized multimode (50/125 µm) OM3
- KH = Multimode (62.5/125 µm) OM1
- RH = Single-mode OS1

##### Ribbon Fiber

- CJ = Standard multimode (50/125 µm) OM2
- SJ = Laser-optimized multimode (50/125 µm) OM3
- KJ = Multimode (62.5/125 µm) OM1
- RJ = Single-mode OS1

##### OptiStrip™ Buffered Fiber

- KN = Multimode (62.5/125 µm) OM1
- RN = Single-mode OS1

### Examples

Order Number	Description
CCHE-CP24-50-P03-CH	Pigtailed Closet Connector Housing Panel, standard multimode OM2 pigtailed, with ST adapters, ceramic insert, composite housing
CCHE-CP36-17-P03-SH	Pigtailed Closet Connector Housing Panel, laser-optimized OM3 pigtailed, with FC adapters, metal insert

# Closet Connector Housing Panels (CCHE-CP)

A LANscape® Solutions Product

## Ordering Information

### Colored Icons

ICN - CP   
**1**

Use the following options to construct the order number:

**1** Select color / symbol.

YLB = Blank (Yellow)



BLP = Phone (Blue)



RDC = Computer (Red)



GRT = Cable TV (Green)



PRD = Satellite (Purple)



ORV = Video (Orange)

