

Certifier40G: Next-Generation Cable Certifier

NGC-4500



Features

- Revolutionary large touch screen at both test ends reduces walking time
- Complete TIA 568/ISO 11801 Copper certification and Tier I Fiber certification
- Future-proof 2000 MHz test frequencies
- Fastest CAT-6A/Class-FA and Tier I Fiber Pass/Fail test
- Level-IV accuracy over the full Class-FA spectrum
- Integrated planning software

Key Benefits

- Improves installer productivity by eliminating unnecessary walking between local and remote units; a Touch² system lets them view and analyze test results at both ends
- Protects your investment with the most advanced tester available that certifies beyond TIA-568 CAT-6A/ISO Class-FA 11801 standards with a 2000 MHz measurement frequency
- Quickly increases the productivity of new and experienced installers using the revolutionary large touch screen with an intuitive user interface
- Accelerates testing and saves 30 minutes each time 150 CAT-6A cables are tested

Optimize Productivity

With its market-leading 9-second CAT-6A certification time per cable, the JDSU Certifier40G saves users 30 minutes each time they test 150 CAT-6A cables (compared to current solutions) and optimizes installer productivity.

The revolutionary Touch² design, with an intuitive touch screen at both ends, makes using the Certifier40G the easiest cable tester ever. A full screen at both ends minimizes the walking time for users in the field by initiating, viewing, and storing tests from either side of a link or channel. Unlike legacy testers, dual-ended fiber tests let installers at each test end quickly determine the problem cable.

Minimize time spent transferring results off the tester with the capacity to store more than 2,000 full CAT-6A graph results.

Future-Proof

The next-generation measurement engine can measure above and beyond the frequency limitations of current testers, ensuring many years of productive service. The Certifier40G can measure frequencies for all current and future cabling standards required for copper cables.

Maximize Value

The Certifier40G drives maximum value with a flexible, cost-effective permanent link design, field-rugged casing, and simple modular upgrade path. The identical local and remote units simplify inventory and repair. The wide frequency range of the base feature set eliminates further licensing costs when upgrading to new technologies.



Easy-to-use large, graphical touch screen

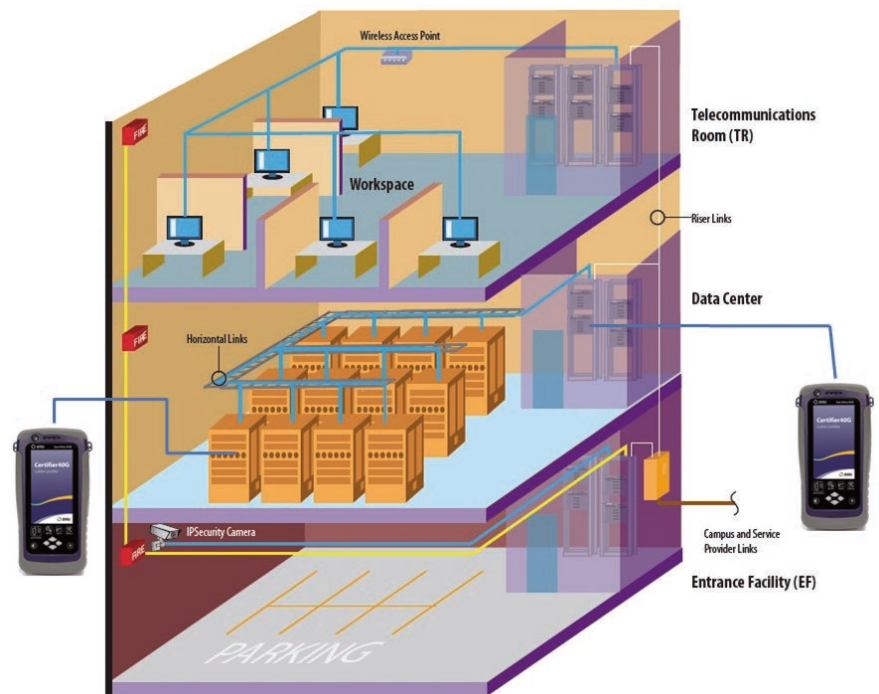


Complete PC desk-reporting software

Increase Productivity

The Certifier40G features a super-bright, color, touch-screen display with quick-launch buttons for easy test access. The rich display provides clear information about test and instrument status.

The Touch² system, with its full user interfaces at both ends of the test, minimizes setup and result evaluation time for technicians. Certification and troubleshooting that previously required two technicians to perform efficiently can now be performed using one technician with minimal walking time.



Economical

- **Innovative permanent-link testing approach**

The Certifier40G achieves the accuracy of probe-attached permanent-link cords with a test solution that is economical and accurate.

- **Rugged modules**

The extra-rugged modules, flush with the main unit, eliminate users accidentally dropping expensive sensitive parts.

- **Easily track and manage devices**

Identical main and remote units simplify managing parts and replacing units.



Specifications

Test Parameters	
Frequency range	1 to 2000 MHz
TIA-1152 Level IIIe and ISO/IEC 61935-1 Level-IV accuracy	
Copper Cable Tests	
Attenuation (insertion loss)	
Near-end crosstalk (NEXT) in pair-to-pair and power-sum	
Attenuation-to-crosstalk ratio far end (ACRF), pair-to-pair, and power-sum	
Return loss	
Loop resistance	
Wiremap and shield	
Cable length	
Total propagation delay	
Delay skew between pairs	
Fiber Cable Tests	
Loss (in each direction)	
Fiber cable length	
Polarity	
Test Standards	
TIA -568-C.2 and TIA-1152 CAT-5, 5e, 6, 6A	
ISO/IEC 11801, EN 50173 Class-C, D, E, EA, F, FA	
TIA-568-C.3 Tier I Fiber certification	
ISO/IEC 11801 Tier I Fiber certification	
Power Supply	
Removable/rechargeable lithium ion batteries provide up to 8 hours continuous operation	
AC power adapter	100–240 V AC

Dimensions	
Mainframe size	232 x 126 x 86.7 mm (9.13 x 4.9 x 3.41 in)
Mainframe height approx. (per unit)	1.4 kg (3.0 lb)
Module size	84 x 70 x 27 mm (3.3 x 2.8 x 1.1 in)
Memory	
More than 500 MB (more than 2000 test results) of internal flash memory	
1 GB USB flash drive included for flexible test record storage	
Connectivity	
Probe interface connector	
RJ45 Ethernet port	
USB host and device interfaces	
Talk set interface: 3.5 mm stereo jack	
Environmental	
Operating temperature	0 to 40°C
Storage temperature	–20 to 60°C
Relative humidity	10 to 80%
Pass/Fail Test Times	
TIA CAT-6/CAT-6A test times	9 s
ISO Class -F/FA test times	15 s
TIA/ISO Tier I Fiber test time	8 s

Ordering Information

Part number	Description
NGC-4500-FA-xx	Copper kit
NGC-4500-MM-xx	Copper and multimode fiber kit
NGC-4500-MMSM-xx	Class multimode fiber and single-mode fiber kit
NGC-4500-6ACH2	CAT6A channel adapter pair
NGC-4500-6ALKIT2	CAT6A permanent-link testing kit
NGC-4500-6ALCORD2	CAT6A permanent-link test-cord pair
NGC-4500-MM2	Multimode adapter pair
NGC-4500-SM2	Single-mode adapter pair
NGC-4500-FACHKIT	Class FA TERA channel test kit: two TERA channel adapters plus one TERA-TERA cable for “set reference”
NGC-4500-FALKIT	Class FA TERA permanent-link test kit: two TERA PL adapters and two TERA-TERA PL test cords
NGC-4500-FALCORD2	Pair of class FA TERA replacement PL test cords
NGC-4500-BIX1	Single Belden BIX PL adapter
NGC-4500-GGFACHKIT	Class FA GG45/AR45 channel test kit: two GG45/AR45 channel adapters plus one GG45-GG45 cable for “set reference”
NGC-4500-PCORD2	CAT6A patch-cord adapter pair
NGC-4500-6PCORD2	CAT6 patch-cord adapter pair
NGC-4500-5PCORD2	CAT5E patch-cord adapter pair
NGC-4500-PCJACK2	CAT6A patch-cord replacement jack pair
NGC-4500-6PCJACK2	CAT6 patch-cord replacement jack pair
NGC-4500-5PCJACK2	CAT5E patch-cord replacement jack pair
NGC-4500-BAT1	Battery pack
NGC-4500-HCASE	Hard carrying case

Upgradable to add end-face inspection

* xx suffix indicates power-cord type for different regions: NA, UK, EU, AU. Please specify regional cables: North America (NA) Type A, European (EU) Type C, United Kingdom (UK) Type G, Australian (AU) Type I.



Two complete units minimize time initiating, naming, and saving results



USB flash drive supports transferring test results



For more fiber testing and certification capabilities, combine the Certifier40G with one of the market-leading JDSU fiber testers, such as the T-BERD®/MTS-2000.

Visit www.jdsu.com/go/Certifier40G for more information, vendor endorsements, and product videos.



Test & Measurement Regional Sales

NORTH AMERICA	LATIN AMERICA	ASIA PACIFIC	EMEA	WEBSITE: www.jdsu.com/test
TOLL FREE: 1 855 ASK-JDSU (1 855 275-5378)	TEL: +1 954 688 5660 FAX: +1 954 345 4668	TEL: +852 2892 0990 FAX: +852 2892 0770	TEL: +49 7121 86 2222 FAX: +49 7121 86 1222	